



Australian Government
Department of Social Services

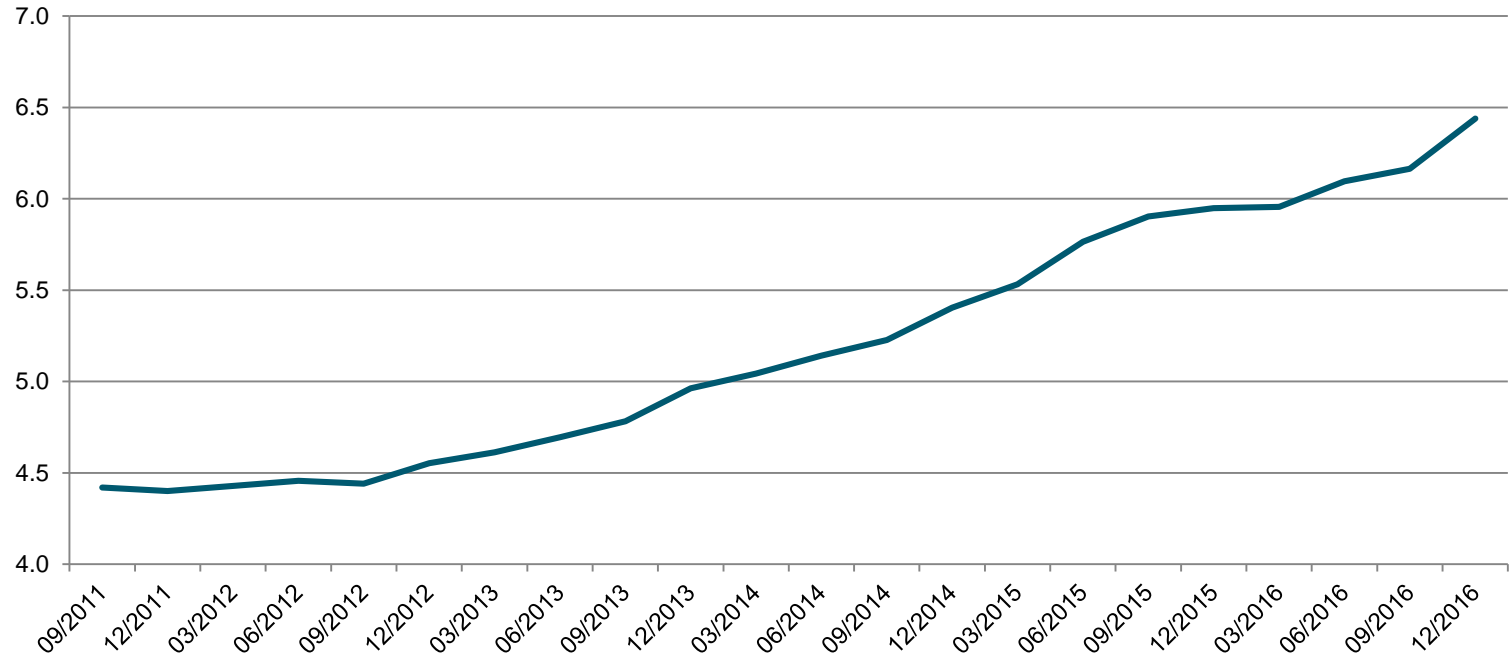


Presentation to Council on the Ageing (COTA)

Paul McBride
Group Manager
Welfare Reform and Housing Policy Group
Department of Social Services
22 June 2017

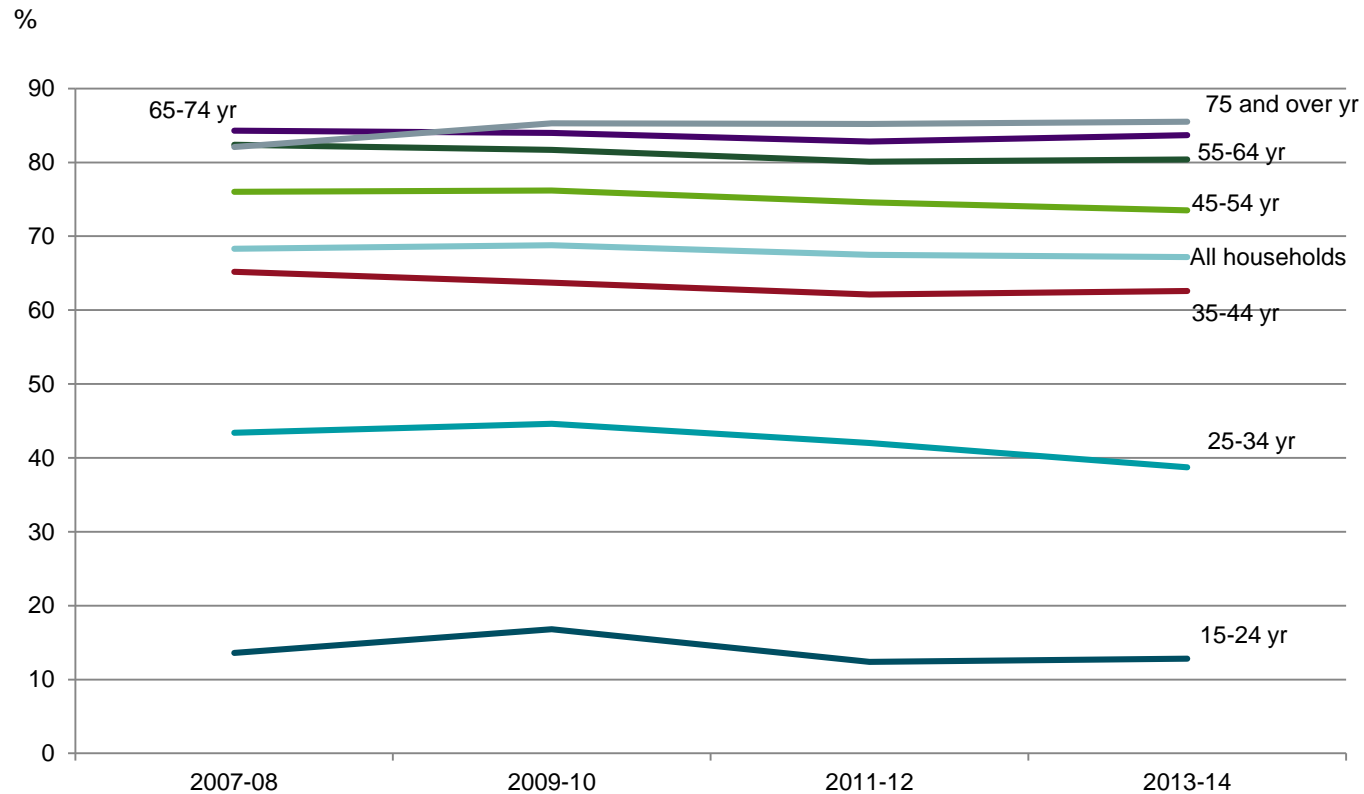
Total value of housing stock

\$ Trillion



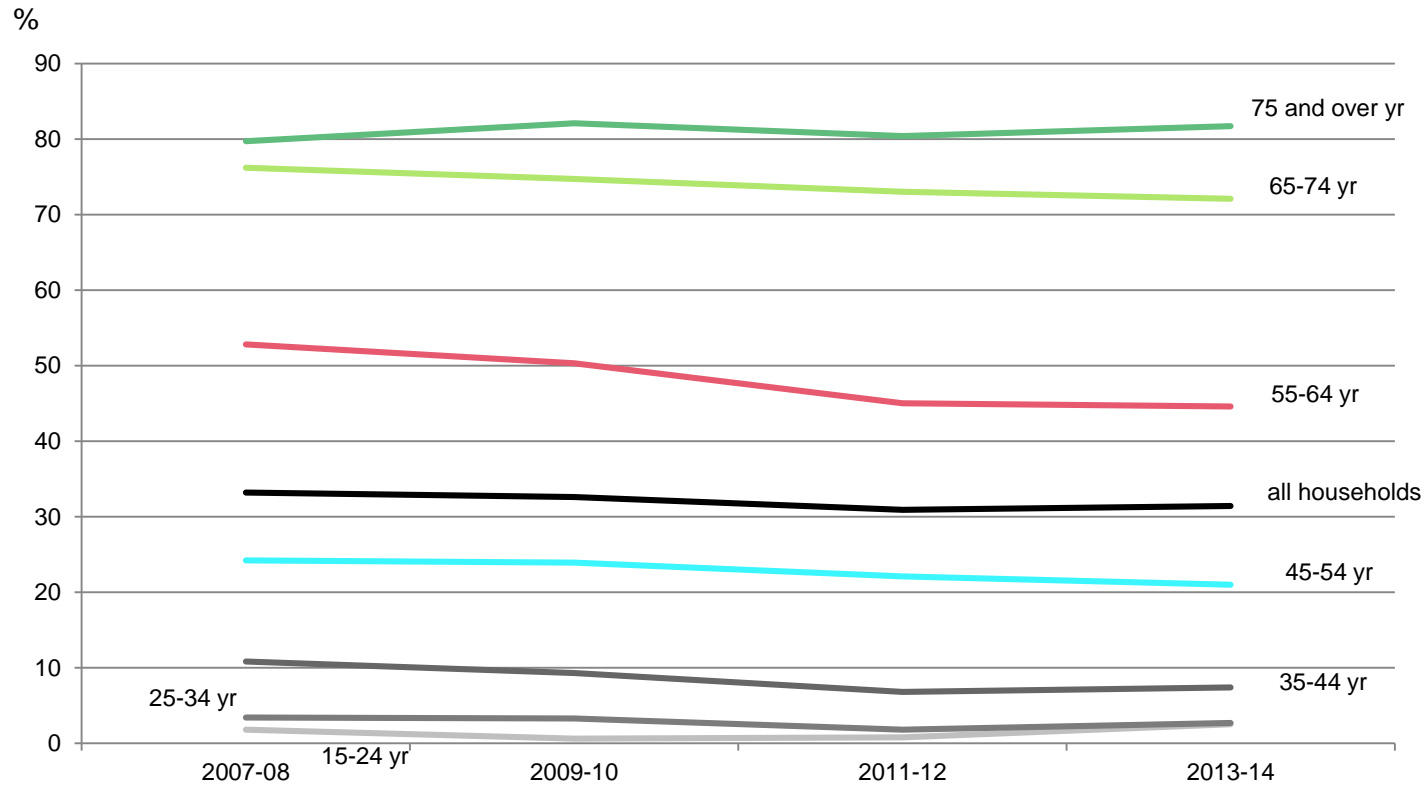
Source: ABS Residential Property Price Index
* nominal \$

Home ownership by age*



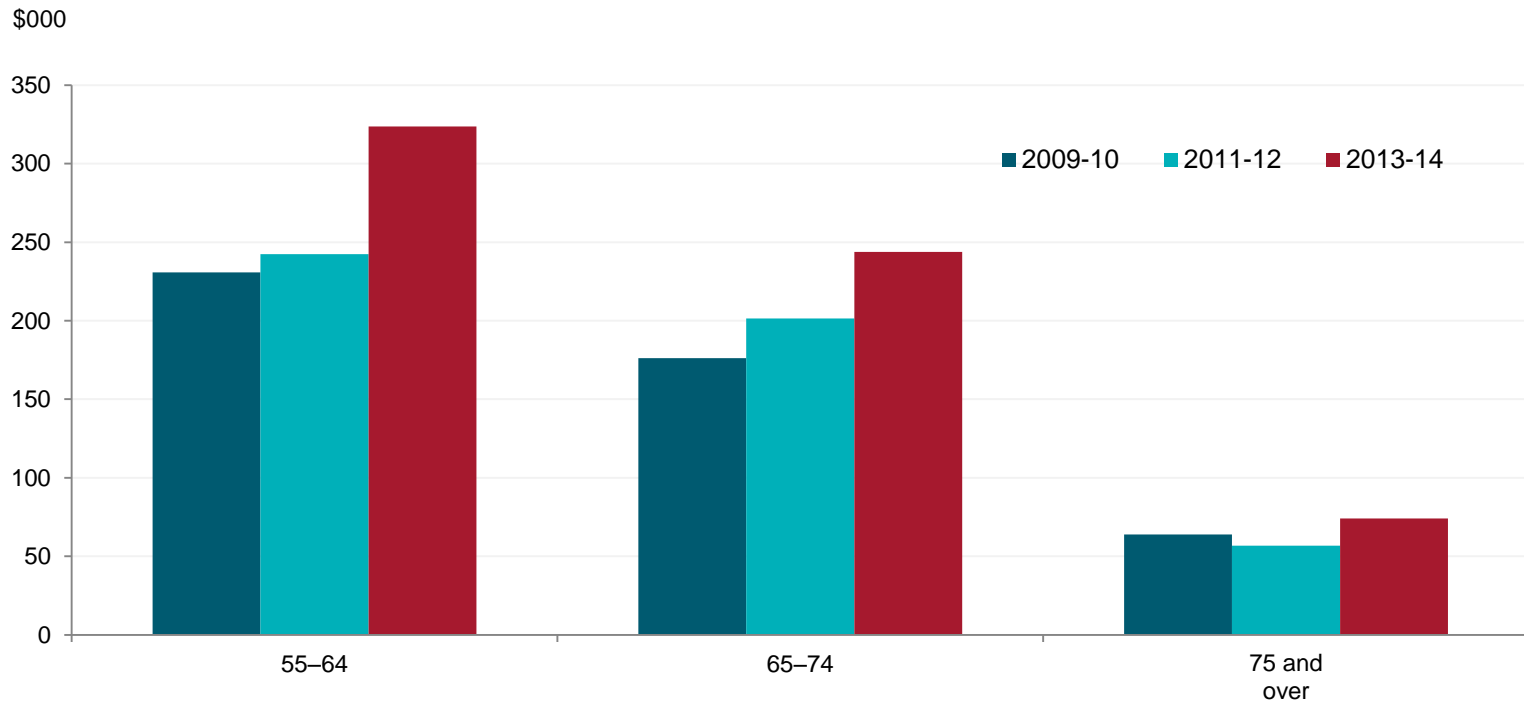
Source: ABS Housing Occupancy and Costs 2007-08 to 2013-14
* of household reference person

Outright home ownership by age*



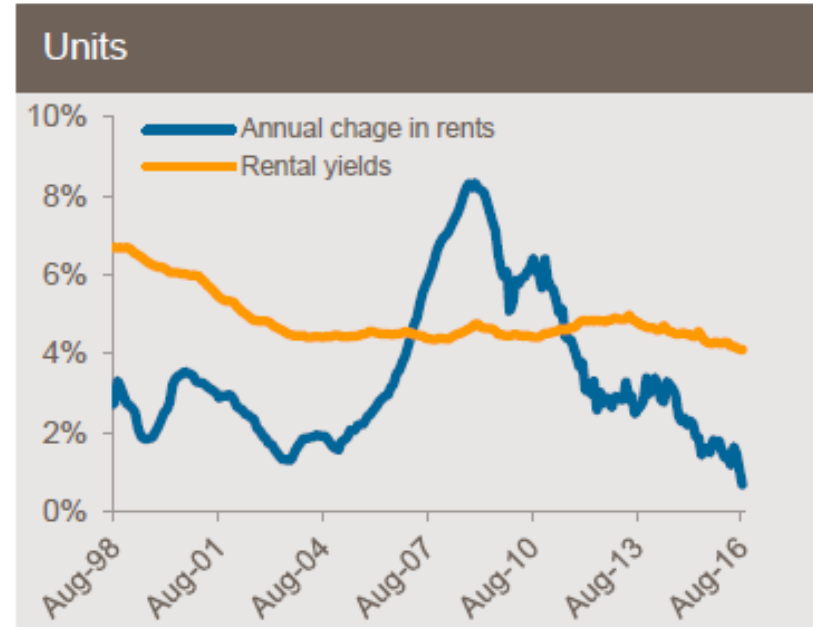
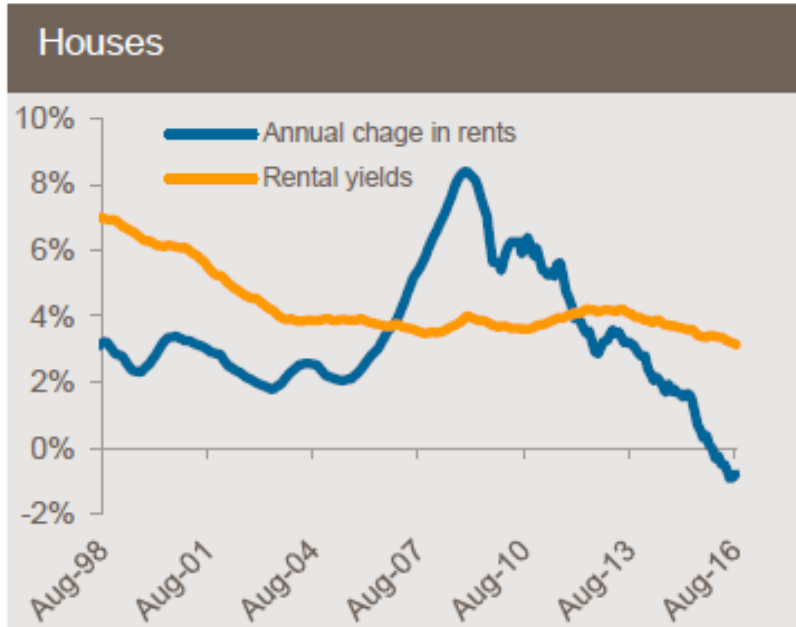
Source: ABS Housing Occupancy and Costs 2007-08 to 2013-14
* of household reference person

Average total superannuation balance of household by (retirement) age group*



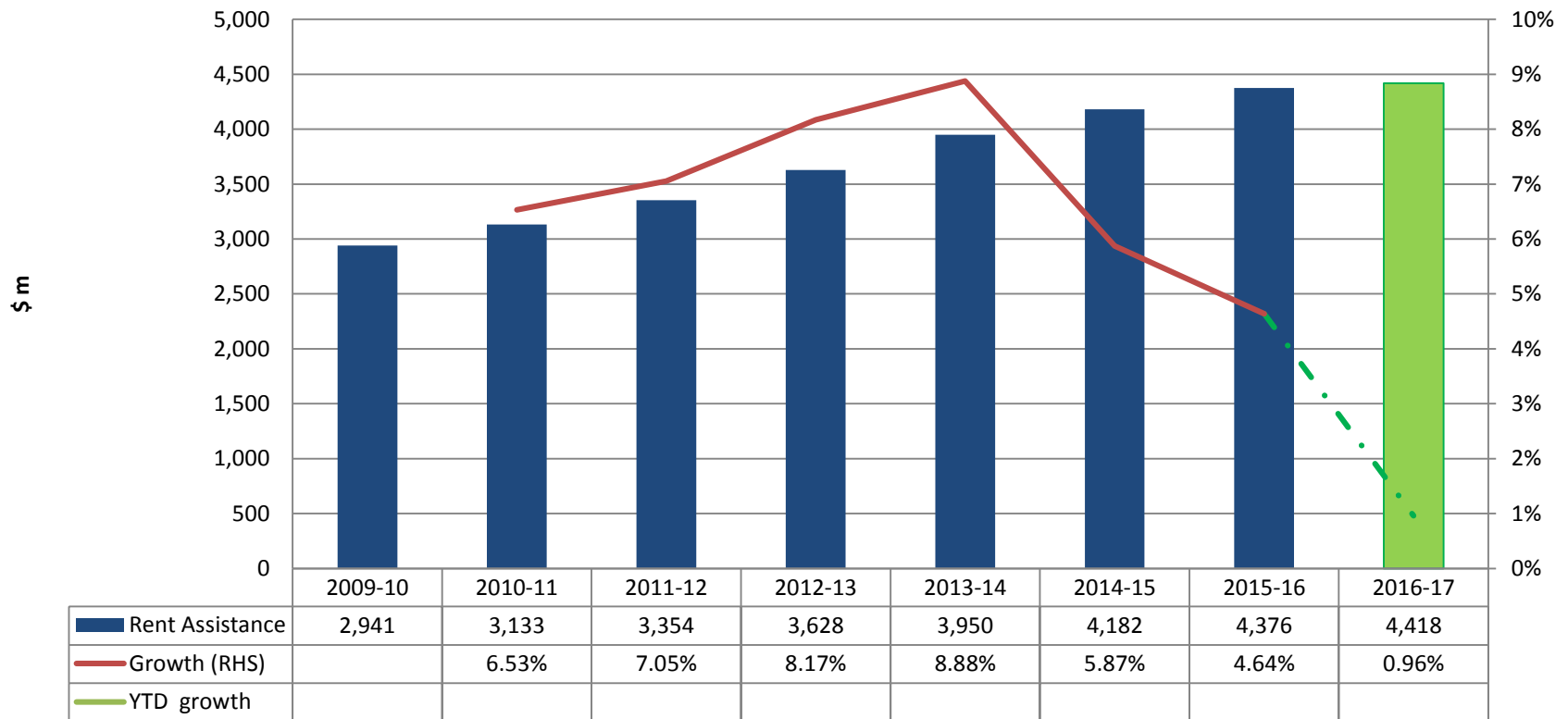
Source: ABS 6523.0 - Household Income and Wealth, Australia, 2013-14 (Table 12.2)
ABS 6554.0 - Household Wealth and Wealth Distribution, Australia, 2011-12 (Table 24)
ABS 6554.0 - Household Wealth and Wealth Distribution, Australia, 2009-10 (Table 24)
* of reference person, nominal \$

Rental yields and annual growth



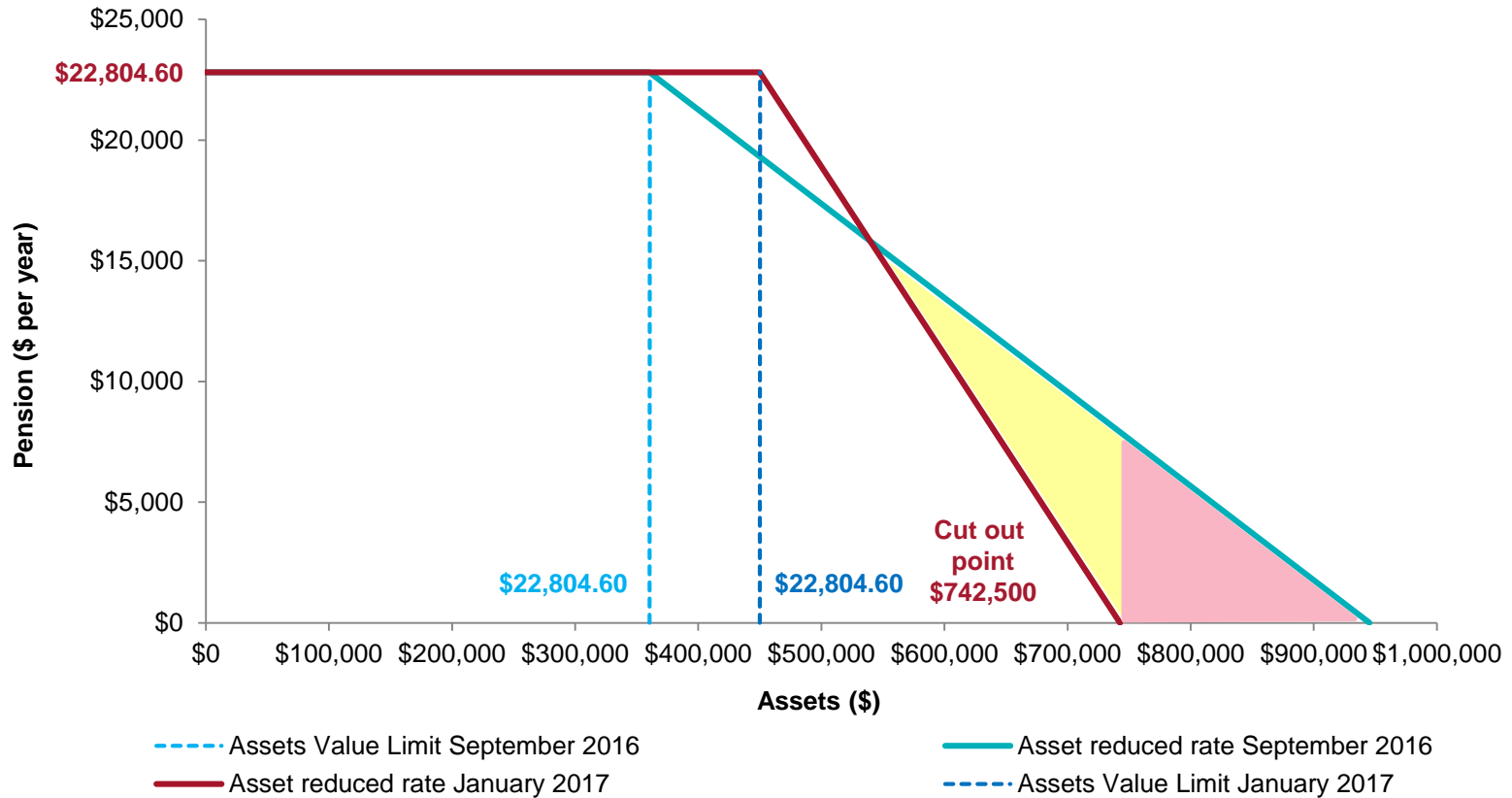
Commonwealth Rent Assistance expenditure and growth rate

Rent Assistance expenditure and growth rate



Changes to the Age Pension Assets Test

Single non-home owner asset test outcomes - September 2016 vs January 2017



Thank you

Paul McBride

Group Manager

Welfare Reform and Housing Policy Group

Department of Social Services